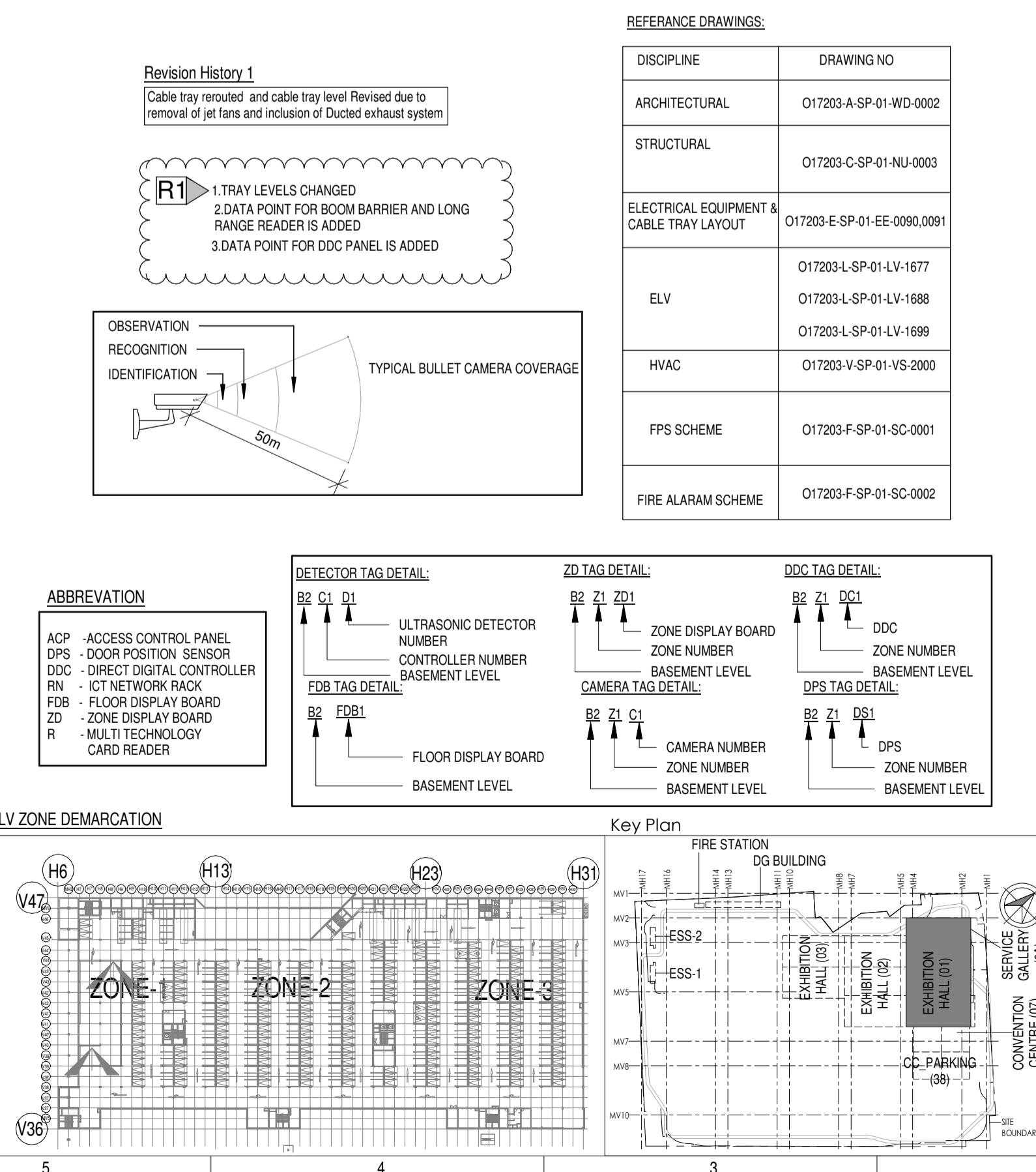


**LEGENDS:**

SL. NO	SYMBOL	DESCRIPTION	FIXING LEVEL
1	DDC	DDC PANEL	1200mm FROM FFL
2	UTR	19 U IT RACK	1100mm FROM FFL
3	TRAY	150Wx50mm(H) METALLIC PERFORATED TYPE CABLE TRAY	MADE OF HOT DIP GALVANISED SHEETS
4	D	ULTRASONIC DETECTOR	SURFACE MOUNTED
5	LED	LED INDICATOR	SURFACE MOUNTED
6	ICD	INDOOR FIXED DOME CAMERA	WALL / SURFACE MOUNTED
7	BC	BULLET CAMERA	SURFACE MOUNTED
8	ANPR	ANPR CAMERA	CEILING MOUNTED
9	EPB	EXIT PUSH BUTTON	1000mm FROM FFL
10	EDR	EMERGENCY DOOR RELEASE	1000mm FROM FFL
11	RT	MULTI TECHNOLOGY CARD READER	1000mm FROM FFL
12	FDB	FLOOR DISPLAY BOARD	310mm FROM BOTTOM OF FLOOR DISPLAY BOARD TO FFL
13	ZD	ZONE DISPLAY BOARD	310mm FROM BOTTOM OF ZONE DISPLAY BOARD TO FFL
14	DP	DOOR POSITION SENSOR	ON DOOR
15	PK	PAYMENT KIOSK	FLOOR / WALL MOUNTED
16	VS	VOICE SOCKET	750mm FROM FFL
17	DS	DATA SOCKET	750mm FROM FFL
18	WAP	WIFI ACCESS POINT	SURFACE MOUNTED
19	MD	MOTION DETECTOR	WALL / CEILING MOUNTED
20	DS	DUCT SUPPORT	
21	CTD	CABLE TRAY RISE & DROP	



**Owner / Employer**  
India International Convention & Exhibition Centre Limited  
Room No. 432A, Ministry of Commerce & Industry, DIFE, Udyog Bhawan, New Delhi - 110011, India

**Department of Industrial Policy and Promotion Ministry of Commerce & Industry Government of India**

**Knowledge Partner**  
Delhi Mumbai Industrial Corridor Development Corporation  
Room No. 341 & 3rd Floor Hotel Ashok, Diplomatic Enclave, 508 Chakrapati, New Delhi - 110021

**Employer's Representative**  
Employer's Engineer  
Programme Management Consultant (PMC)

**AECOM**  
Preliminary Engineering Architecture Consultants (PEAC)

**idom** **CPKUREJA ARCHITECTS**  
Av. Del Monasterio de El Escorial, 4, 28049 Madrid, Spain  
No-D-1, Ashwini Building, Green Park, New Delhi, Delhi 110016, India

**EPC Contractor**  
**L&T Construction**  
Buildings & Factories  
Mount Poonamallee Road, Manapakkam, P.O.No.979, Chennai - 600 089

**EPC Contractor's Representatives**  
**ARCOP** Arcop Associates Pvt. Ltd.  
A-15, Pamposh Enclave, G.K-1 New Delhi, Delhi 110048, India

**Structural Proof Consultant**  
**Indian Institute of Technology (IIT) Madras**  
Sadar Patel Rd. Opposite to C. L.R.I. Adyar, Chennai, Tamil Nadu 600036

**MEP Proof Consultant**  
**egis** Egis India Consulting Engineers Pvt. Ltd.  
Plot No. 66, Sector 32, Institutional Area, Gurgaon, Haryana 122001

**ICT Proof Consultant**  
**CCR** CCR Consulting Engineers Pvt. Ltd.  
#47/1, 3rd Floor, Narayana Arcade, Subramaniam Road, Hebbalappa Circle, Basavanagudi, Bengaluru - 560004

**Certification**

**EPC Contractor**

**Design Consultant**

**Architectural Consultant**

**Proof Consultant**

Structural	MEP	ICT

**PEAC**

**Issued by:**  
Employer / Employer's Engineer

REV	DESCRIPTION	DATE	DSGN	DRWN	CHKD	APPD
R1	REVISED AS PER REVISION HISTORY-1 AND ISSUED AS GOOD FOR CONSTRUCTION	24-04-2019	SP	PSY	MSK	GNR

**Revisions**

DISCIPLINE	REVISION	DATE	BY	CHKD
ARCHITECTURE	FPS			
STRUCTURAL	PIPING			
ELECTRICAL	PHE			
ELV SYSTEM	GIS			
HVAC	GEOTECH.			

**Checked by:** SIGN DATE CHECKED BY: SIGN DATE

**EPC Contractor**  
**L&T Construction**  
Buildings & Factories

**JOB NO:** O17203

**Project Name**  
DESIGN AND CONSTRUCTION OF INDIA INTERNATIONAL CONVENTION & EXPO CENTRE SECTOR 25, DWARKA, NEW DELHI, INDIA

**Drawing Status**  
GOOD FOR CONSTRUCTION (GFC)

**Drawing No** **Rev. No**

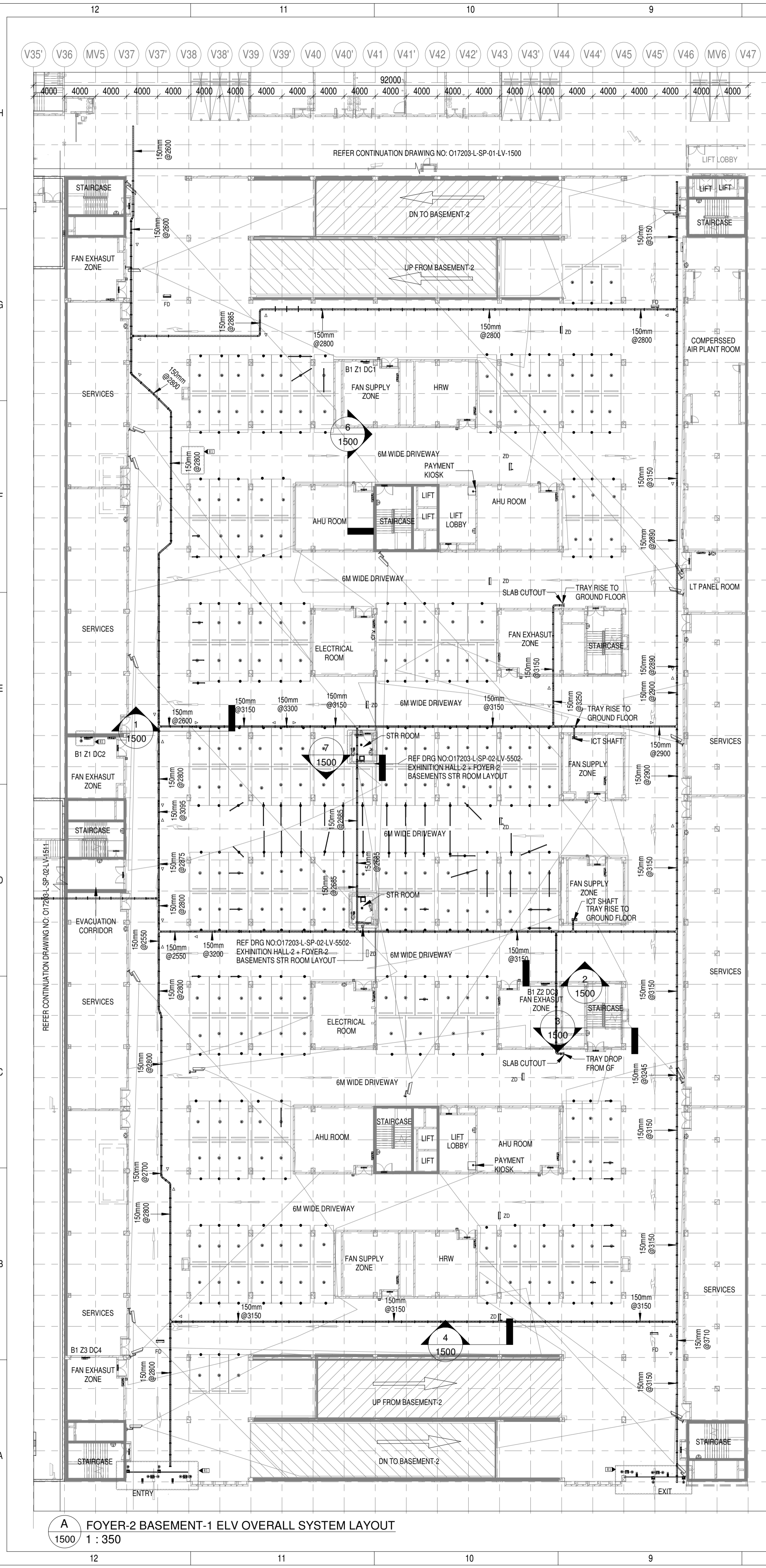
Drawing No	Rev. No
L 01 1600	R1

**Title:**  
FOYER-1 BASEMENT-2 OVERALL ELV SYSTEM LAYOUT

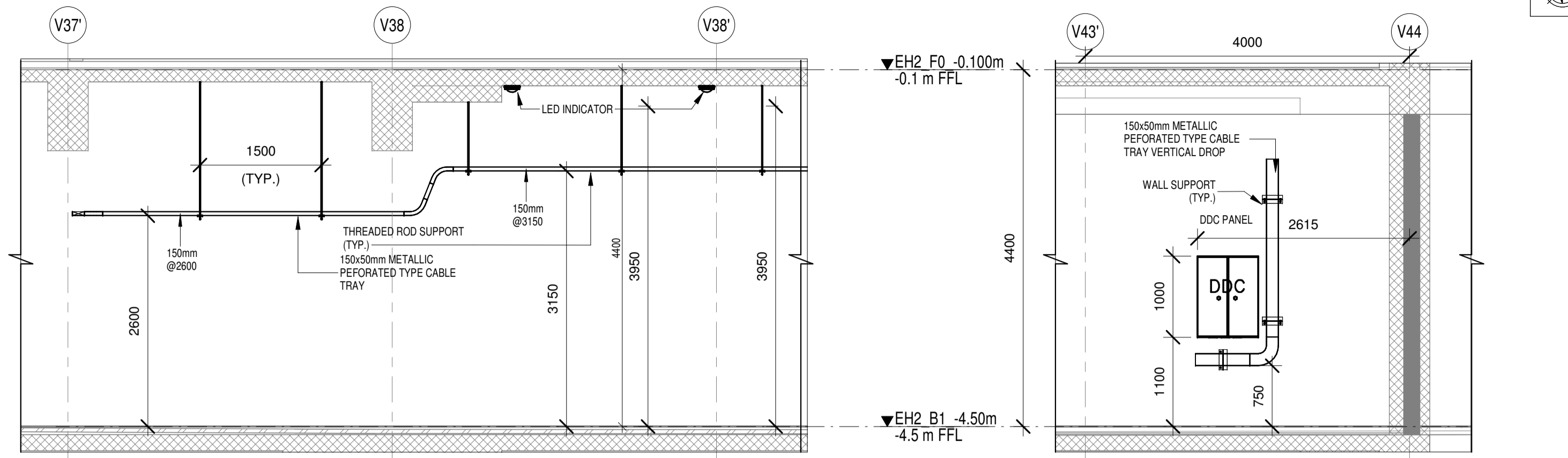
**EDRC DWG No:** O17203-L-SP-01-LV-1600 **Scale:** As indicated **Sheet Size:** A1

O17203-L-SP-01-LV-1600 (FOYER-1 BASEMENT-2 OVERALL ELV SYSTEM LAYOUT)

This drawing is the property of L&T Construction. BEE-EDRC and must not be passed on to any person or body nor be copied or otherwise made use of without our prior permission in writing.

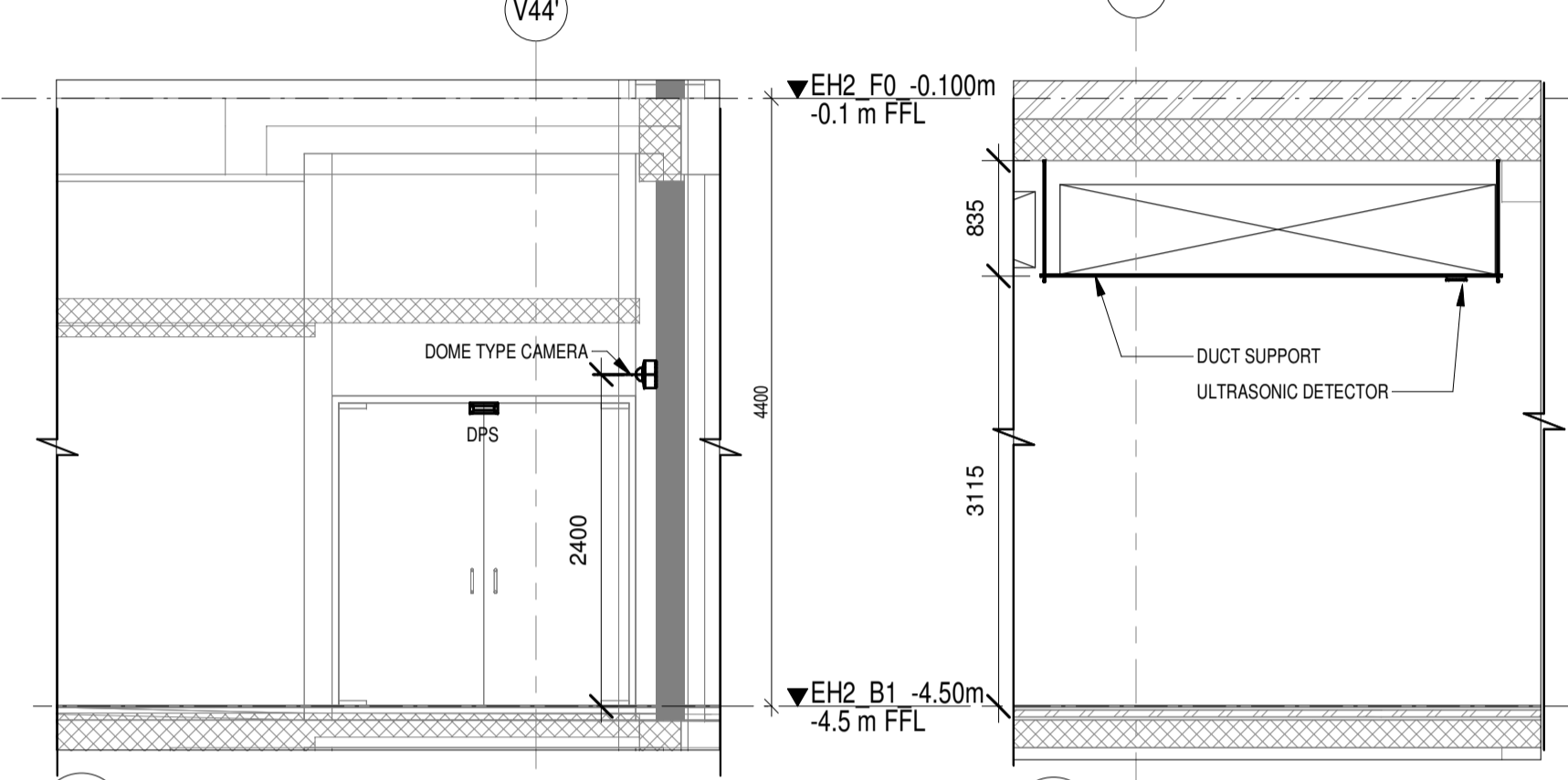


**FOYER-2 BASEMENT-1 ELV OVERALL SYSTEM LAYOUT**  
1 : 350



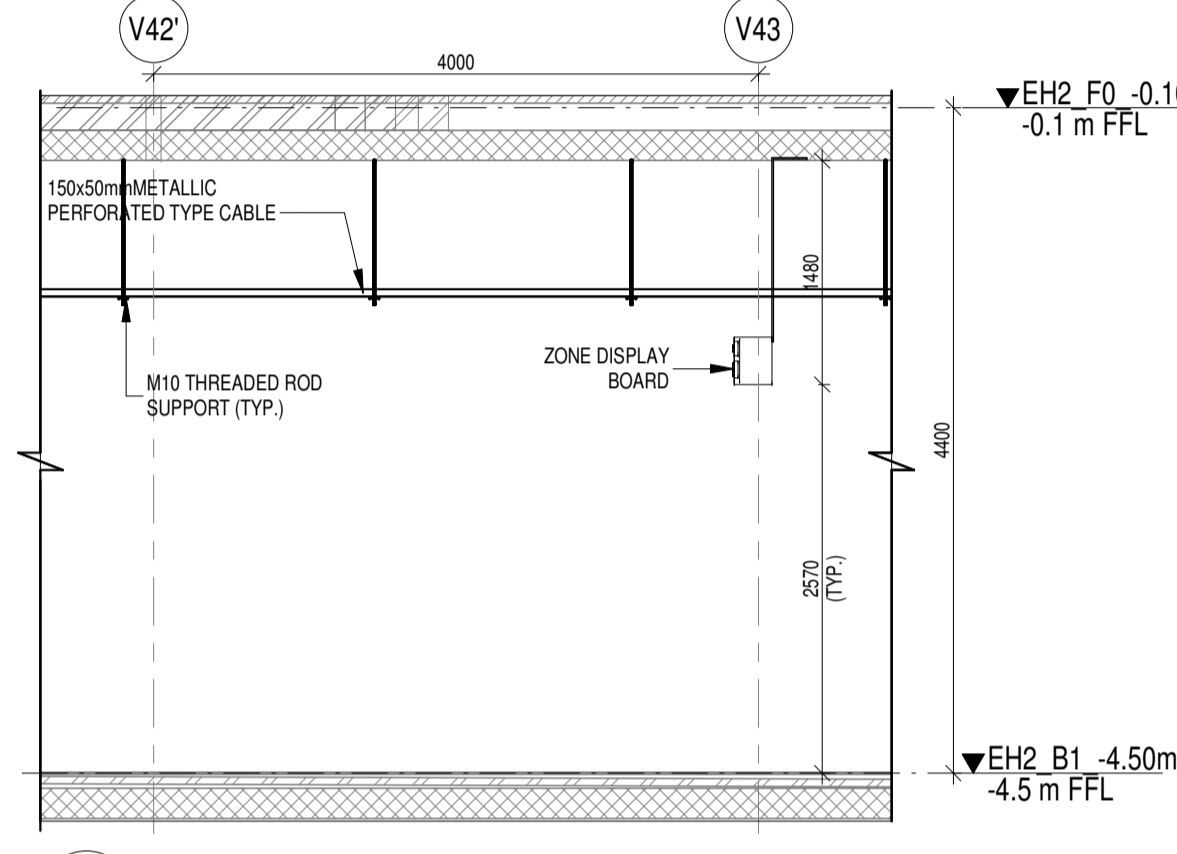
**SECTION-1**  
1500 1 : 50

**SECTION-2**  
1500 1 : 50

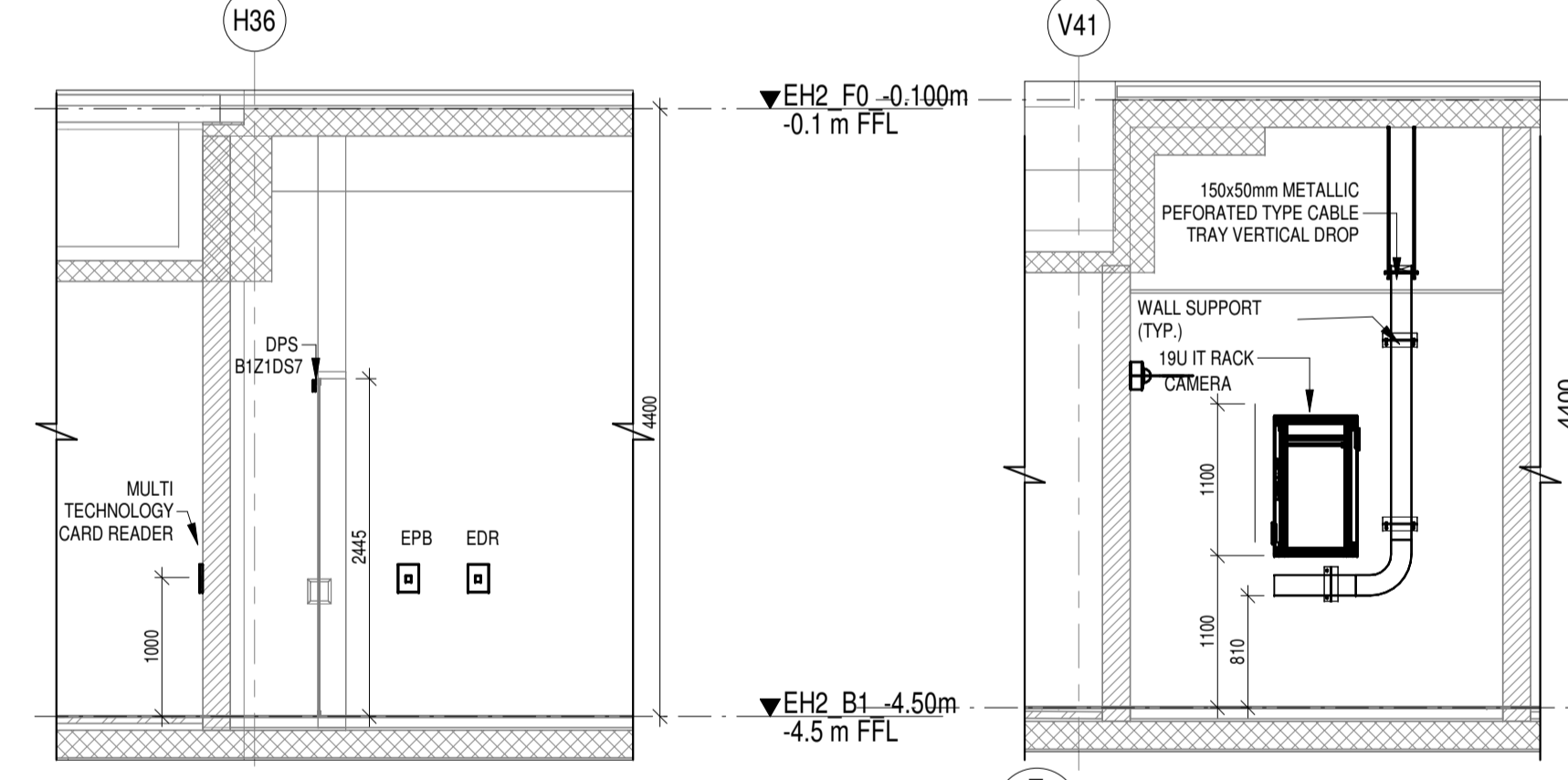


**SECTION-3**  
1500 1 : 50

**SECTION-5**  
1500 1 : 50



**SECTION-4**  
1500 1 : 50



**SECTION-6**  
1500 1 : 50

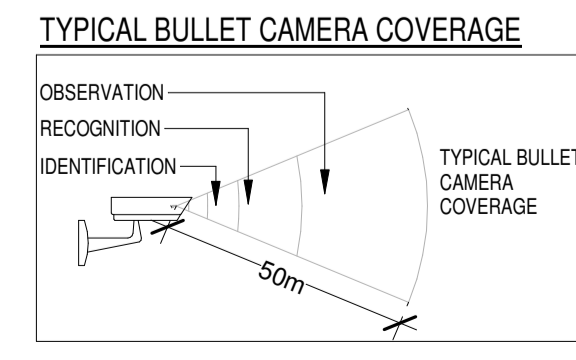
**SECTION-7**  
1500 1 : 50

**LEGENDS:**

SL. NO.	SYMBOL	DESCRIPTION	FIXING LEVEL
1	DDC	DDC PANEL	1200mm FROM FFL
2	19 U/I RACK	19 U/I RACK	1100mm FROM FFL
3	150x50mm(H) METALLIC PERFORATED TYPE CABLE TRAY	MADE OF HOT DIP GALVANISED SHEETS	
4	D	ULTRASONIC DETECTOR	SURFACE MOUNTED
5	LED	LED INDICATOR	SURFACE MOUNTED
6	INDOOR FIXED DOME CAMERA	INDOOR FIXED DOME CAMERA	SURFACE / WALL MOUNTED
7	BULLET CAMERA	BULLET CAMERA	SURFACE MOUNTED
8	EPB	EXIT PUSH BUTTON	1000mm FROM FFL
9	EDR	EMERGENCY DOOR RELEASE	1000mm FROM FFL
10	MTCR	MULTI TECHNOLOGY CARD READER	1000mm FROM FFL
11	FDB	FLOOR DISPLAY BOARD	3100mm FROM BOTTOM OF FLOOR DISPLAY BOARD TO FFL
12	ZDB	ZONE DISPLAY BOARD	3100mm FROM BOTTOM OF ZONE DISPLAY BOARD TO FFL
13	DOOR POSITION SENSOR	DOOR POSITION SENSOR	ON DOOR
14	PK	PAYMENT KIOSK	FLOOR / WALL MOUNTED
15	VS	VOICE SOCKET	750mm FROM FFL
16	DS	DATA SOCKET	750mm FROM FFL
17	WAP	WIFI-ACCESS POINT	SURFACE MOUNTED
18	MD	MOTION DETECTOR	SURFACE MOUNTED
19	DS	DUCT SUPPORT	
20	CT	CABLE TRAY RISE & DROP	
21	ANPR	ANPR CAMERA	CEILING MOUNTED

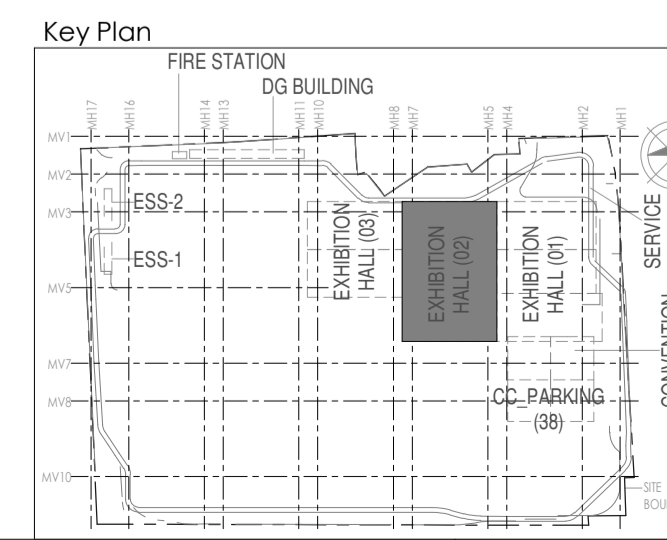
**Revision History 1**  
Cable tray reworked and cable tray level Revised due to removal of jet fans and inclusion of Ducted exhaust system

**ABBREVIATION**  
ACP - ACCESS CONTROL PANEL  
DPS - DOOR POSITION SENSOR  
DDC - DIRECT DIGITAL CONTROLLER  
RN - IT RACK  
FDB - FLOOR DISPLAY BOARD  
ZB - ZONE DISPLAY BOARD  
R - MULTI TECHNOLOGY CARD READER



- NOTES:**
- GENERAL**
- CONDUITS IN EXPOSED MS CONDUIT TO BE USED.
  - OVER FALSE CEILING/UNDER FLOOR OR EMBEDDED PVC CONDUITS TO BE USED.
  - ALL CONDUITS SHOULD BE EQUIPPED WITH A PULL CORDS WITH SUITABLE TENSION POWER.
  - PULL BOXES WITH SUITABLE SIZE SHOULD BE PROVIDED IN ALL CONDUIT SECTIONS THAT ARE CONTAINING MORE THAN TWO 90 DEGREE BENDS.
  - ALL DEVICES LOCATIONS AND ORIENTATION ARE INDICATIVE. EXACT LOCATION SHALL BE SHOWN IN THE OEM SHOP DRAWING.
  - THIS DRAWING IS ONLY INDICATIVE AND MAY VARY ACCORDING TO SITE CONDITION AND REQUIREMENT.
  - THE EXACT CONDUIT/TRAY ROUTINGS SHALL BE DECIDED AT SITE IN CONSULTATION WITH THE ENGINEER INCHARGE TO SUIT LEVEL AND SITE CONDITION.
  - A CABLE TRAY SUPPORT MUST ALSO BE PLACED WITHIN 60 METERS ON EACH SIDE OF ANY CONNECTION TO A FITTING.
  - A MINIMUM SEPARATION DISTANCE 300 mm AND SHOULD BE KEPT PHYSICALLY BETWEEN LIGHT CURRENT CABLES AND MEDIUM VOLTAGE CABLES.
  - METALLIC PERFORATED TYPE HOT DIP GALVANIZED CABLE TRAY FOR ICT CCTV SYSTEM.

- FOR CCTV CAMERA, CAT6A CABLES SHALL BE USED. CABLES SHALL BE DRAWN THROUGH TRAY 20 mm MS CONDUITS UP RESPECTIVE NEARBY STR ROOM.
  - THE CCTV CAMERA VIEW ANGLE TO BE SET AS PER THE COVERAGE LOCATION EX. ENTRANCE DOOR/RECEPTION ETC.
  - THE SHOWN CAMERA LOCATIONS ARE INDICATIVE. FIELD OF VIEW OF EACH CAMERA MUST BE GENERATED BY OEM/ENDOR FOR JUSTIFYING CHOSEN CAMERA TYPE, LENS TYPE ETC
- ACCESS CONTROL SYSTEM**
- ALL CABLES FROM CARD READER/MAGNETIC LOCK/DOOR CONTACT/PUSHBUTTON SHALL BE TERMINATED AT ACCESS CONTROL PANEL.
  - ACCESS CONTROL PANELS SHALL BE CONNECTED TO SWITCH LOCATED AT NEAR BY STR ROOM. BY CAT 6A UTP CABLE.
  - POWER POINT/SOCKET FOR ALL THE ACCESS CONTROL PANELS. REFER ELECTRICAL POWER LAYOUT.
  - DPS ARE CONNECTED TO RESPECTIVE ZONE INTRUSION ALARM CONTROLLER IN NEARBY STR ROOM BMS.
- CAR PARKING NOTES**
- ALL CABLES FROM ZONAL CONTROLLER PANEL TO EACH ULTRASONIC DETECTOR SHALL BE LOOPED THROUGH 40x1.5sq mm TWISTED PAIR SHIELDED ARMoured CABLE AS PER TAGGING INDICATED IN THE DRAWING.
  - ALL CABLES FROM ULTRASONIC DETECTOR TO LED INDICATOR SHALL BE CONNECTED THROUGH 40x1.5sq mm TWISTED PAIR SHIELDED ARMoured CABLE.
  - THE DISPLAY AT ENTRY OF THE BASEMENT & ZONAL DISPLAY SHALL BE LOOPED & CONNECTED TO DISPLAY LOGIC CONTROLLER BY 40x1.5sq mm TWISTED PAIR SHIELDED ARMoured CABLE.
  - ZONAL CONTROLLER SHALL BE CONNECTED TO NEAREST NETWORK SWITCH THROUGH CAT 6A CABLE.
- DATA POINTS**
1. A PAIR 23 AWG CAT6A UTP CABLE TO BE USED TO CONNECT RJ 45 DATA VOICE SOCKETS TO JACK PANEL.
  - WHATEVER POWER AND LV CABLES ARE RUNNING IN PARALLEL, THEY SHALL BE SEPARATED BY A DISTANCE OF MINIMUM 300MM.
- AREAS AND MEP ROOMS CABLES FOR DATA & VOICE SHALL BE TAKEN FROM CEILING CONDUIT**
- ALL WALL MOUNTED TELEPHONE / DATA SOCKETS COULD BE ALIGNED AT A HEIGHT OF 750MM FROM FFL UNLESS AND OTHERWISE SPECIFIED SOCKETS ABOVE COUNTER SLABS TO BE MOUNTED AT A HEIGHT OF 900MM FROM FFL SOCKETS IN PLANT ROOMS TO BE MOUNTED AT A HEIGHT OF 800MM FOR ALL OTHER TELEPHONE AND DATA SOCKETS. THE LEVEL SHALL BE MAINTAINED AS PER FURNITURE LAYOUT AND ARCHITECTURAL CONCURRENCE AS PER SITE CONDITION.
  - THE STORE AND SERVICES AREA DATA VOICE POINTS WILL BE PROVIDED BASED ON FURNITURE LAYOUT.
- DAS SYSTEM**
- THE DAS SYSTEM FOR MOBILE CARRIERS WILL BE DONE AFTER SITE SURVEY BY SPECIALIST ONCE STRUCTURE IS READY AND EPC WILL ENSURE THE DAS COVERAGE.



**Owner / Employer**  
India International Convention & Exhibition Centre Limited  
Room No. 452A, Ministry of Commerce & Industry, DfP, Udyog Bhawan, New Delhi - 110011, India

**Department of Industrial Policy and Promotion Ministry of Commerce & Industry Government of India**

**Knowledge Partner**  
Delhi Mumbai Industrial Corridor Development Corporation  
Room No. 341 & 3rd Floor Hotel Anahat, Diplomatic Enclave, 508 Chankapuri, New Delhi - 110021

**DMICDC**

**Employer's Representative**  
Employer's Engineer  
Program Management Consultant (PMC)

**AECOM**

**Preliminary Engineering Architecture Consultants (PEAC)**  
idom CPKUREJA ARCHITECTS

**Av. Del Monasterio de El Escorial, 4, 28049 Madrid, Spain** **No-D-1, Ashwad Building, Green Park, New Delhi, Delhi 110016, India**

**EPC Contractor**  
**L&T Construction**  
Buildings & Factories  
Mount Poonamallee Road, Manapakkam, P.O.No.779, Chennai - 600 089

**EPC Contractor's Representatives**  
**Design Consultant**  
Engineering Design and Research Center (EDRC)  
L&T Construction - Buildings & Factories  
**Architectural Consultant**  
ARCOP Arcop Associates Pvt. Ltd.  
A-15, Pamposse Enclave, G.K-1 New Delhi, Delhi 110048, India

**Structural Proof Consultant**  
Indian Institute of Technology (IIT) Madras  
Sardar Patel Rd, Opposite to C. L.R.I. Adyar, Chennai, Tamil Nadu 600036

**MEP Proof Consultant**  
Egis India Consulting Engineers Pvt. Ltd.  
Plot No. 66, Sector 32, Institutional Area, Opp. Genesis Solutions, Gurgaon, Haryana 122001

**ICT Proof Consultant**  
CCR Consulting Engineers Pvt. Ltd.  
#47/1, 3rd Floor, Narayana Arcade, Subramaniam Road, Heerajogger Circle, Basavanagudi, Bangalore - 560004

**Certification**  
**EPC Contractor**  
**Design Consultant**  
**Architectural Consultant**  
**Proof Consultant**  
Structural MEP ICT

**PEAC**

**Issued by:**  
Employer / Employer's Engineer

REV	DESCRIPTION	DATE	DSGN	DRWN	CHKD	APPD
R1	REVISED AS PER REVISION HISTORY-1 AND ISSUED AS GOOD FOR CONSTRUCTION	29.05.19	SP	PSY	MSK	GNR

**Revisions**

ARCHITECTURE	MEP	ICT
STRUCTURAL	PIPING	
ELECTRICAL	PHE	
ELV SYSTEM	GIS	
HVAC	GEOTECH.	

**Checked by:** SIGN DATE CHECKED BY SIGN DATE

**EPC Contractor**  
**L&T Construction**  
Buildings & Factories

**JOB No. : O17203**

**Project Name**  
DESIGN AND CONSTRUCTION OF INDIA INTERNATIONAL CONVENTION & EXPO CENTRE

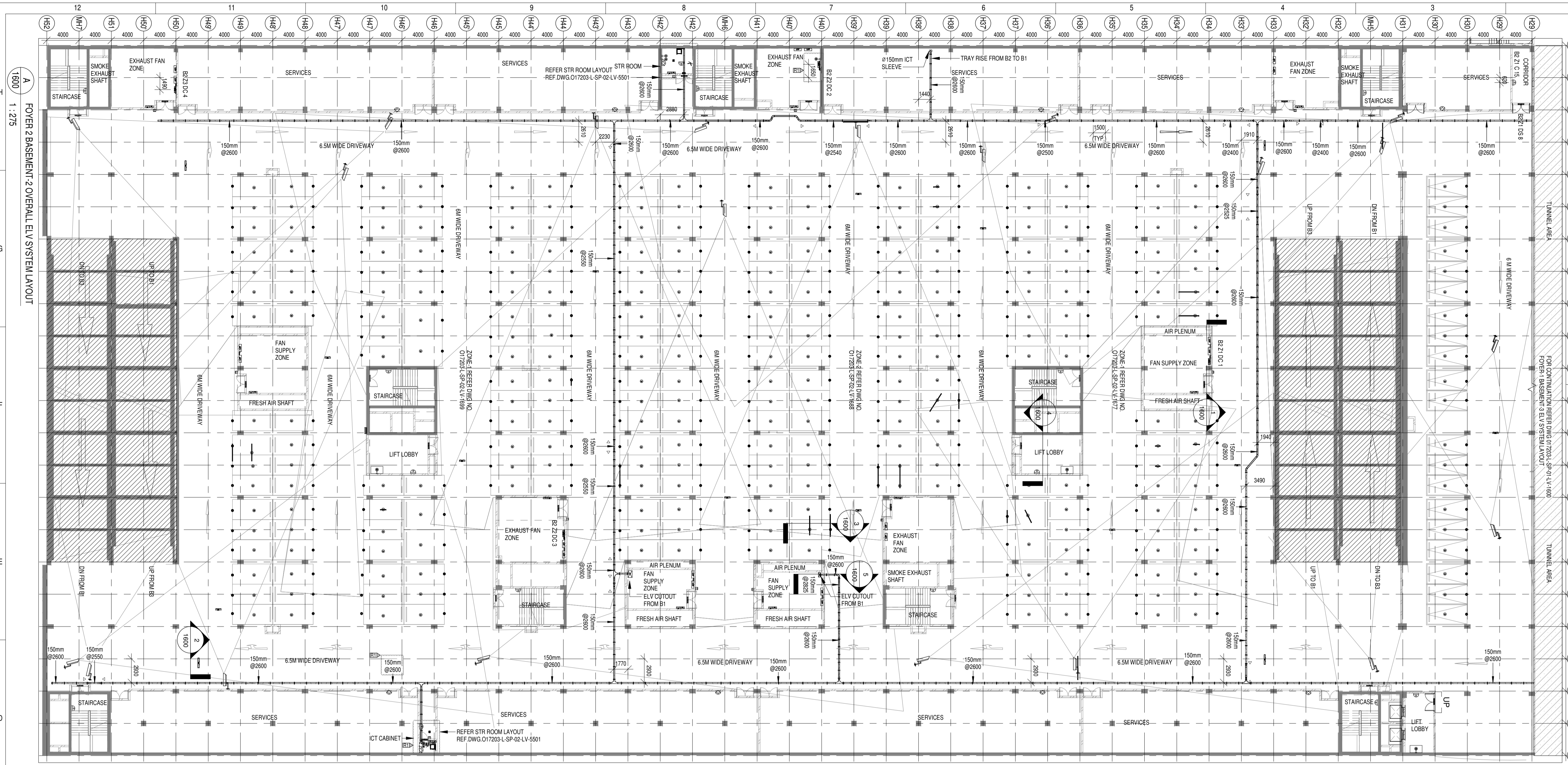
**SECTOR 25, DWARKA, NEW DELHI, INDIA**

**Drawing Status**  
GOOD FOR CONSTRUCTION (GFC)

**Drawing No** **Rev. No**  
L 02 1500 R1

**Title :**  
**EXHIBITION HALL-2**  
**FOYER-2 BASEMENT-1 ELV OVERALL SYSTEM LAYOUT**

**EDRC DWG No :** O17203 - L - SP - 02 - LV - 1500 **Scale** As indicated **Sheet Size** A1



**Owner / Employer**  
 India International Convention & Exhibition Centre Limited  
 Room No. 452A, Ministry of Commerce & Industry, D.P.P., Udyog Bhawan, New Delhi - 110011, India

Department of Industrial Policy and Promotion Ministry of Commerce & Industry Government of India

**Knowledge Partner**  
 Delhi Mumbai Industrial Corridor Development Corporation  
 Room No. 341 & 3rd Floor Hotel Anshok, Diplomatic Enclave, 508 Chankapuri, New Delhi - 110021

**Employer's Representative**  
 Employer's Engineer  
 Programme Management Consultant (PMC)

**AECOM**  
 Preliminary Engineering Architecture Consultants (PEAC)

**idom** **CPKUREJA ARCHITECTS**  
 Av. Del Monasterio de El Escorial, 4, 28049 Madrid, Spain  
 No.D-1, Ashwini Building, Green Park, New Delhi, Delhi 110016, India

**EPC Contractor**  
**L&T Construction**  
 Buildings & Factories  
 Mount Poonamallee Road, Manapakkam, P.O.No.979, Chennai - 600 089

**EPC Contractor's Representatives**  
**Design Consultant**  
 Engineering Design and Research Center (EDRC)  
 L&T Construction - Buildings & Factories

**Architectural Consultant**  
**ARCOP** Arcop Associates Pvt. Ltd.  
 A-15, Pampose Enclave, G.K-1 New Delhi, Delhi 110048, India

**Structural Proof Consultant**  
**Indian Institute of Technology (IIT) Madras**  
 Sardar Patel Rd. Opposite to C. L.R.I. Adyar, Chennai, Tamil Nadu 600036

**MEP Proof Consultant**  
**Egis India Consulting Engineers Pvt. Ltd.**  
 Plot No. 66, Sector 32, Institutional Area, Opp. Zenith Solutions, Gurgaon, Haryana 122001

**ICT Proof Consultant**  
**CCR Consulting Engineers Pvt. Ltd.**  
 #47/1, 3rd Floor, Narayana Arcade, Subramaniam Road, Heerkoppa Circle, Basavanagudi, Bangalore - 560004

**Certification**

**Design Consultant**

**Architectural Consultant**

**Proof Consultant**

**Structural** **MEP** **ICT**

**PEAC**

**Issued by:**  
 Employer / Employer's Engineer

REVISED AS PER REVISION	DATE	DSGN	DRWN	CHKD	APPD
R1 HISTORY-1 AND ISSUED AS GOOD FOR CONSTRUCTION	24-04-2019	SP	PSY	MSK	GNR

REV	DESCRIPTION	DATE	DSGN	DRWN	CHKD	APPD

DISCIPLINE	DRAWING NO
ARCHITECTURAL	O17203-A-SP-02-WD-0002
STRUCTURAL	O17203-C-SP-02-NU-0003
ELECTRICAL EQUIPMENT & CABLE TRAY LAYOUT	O17203-E-SP-02-EE-0090,0091
ELV	O17203-L-SP-02-LV-1600
HVAC	O17203-V-SP-02-VS-2000
FPS	O17203-F-SP-02-SC-0002
FIRE ALARM SYSTEM	O17203-F-SP-02-SC-0002

**EPC Contractor**  
**L&T Construction**  
 Buildings & Factories

JOB NO : O17203

Project Name  
**DESIGN AND CONSTRUCTION OF INDIA INTERNATIONAL CONVENTION & EXPO CENTRE SECTOR 25, DWARKA, NEW DELHI, INDIA**

Drawing Status  
**GOOD FOR CONSTRUCTION (GFC)**

Drawing No **L 02 1600** Rev. No **R1**

Title:  
**FOYER 2 BASEMENT-2 OVERALL ELV SYSTEM LAYOUT**

EDRC DWG No :  
 O17203 - L - SP - 02 - LV - 1600

Scale **As indicated** Sheet Size **A1**

**LEGENDS:**

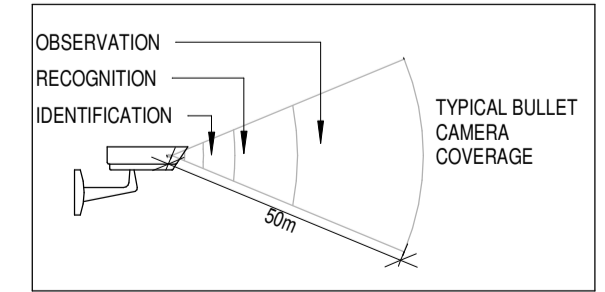
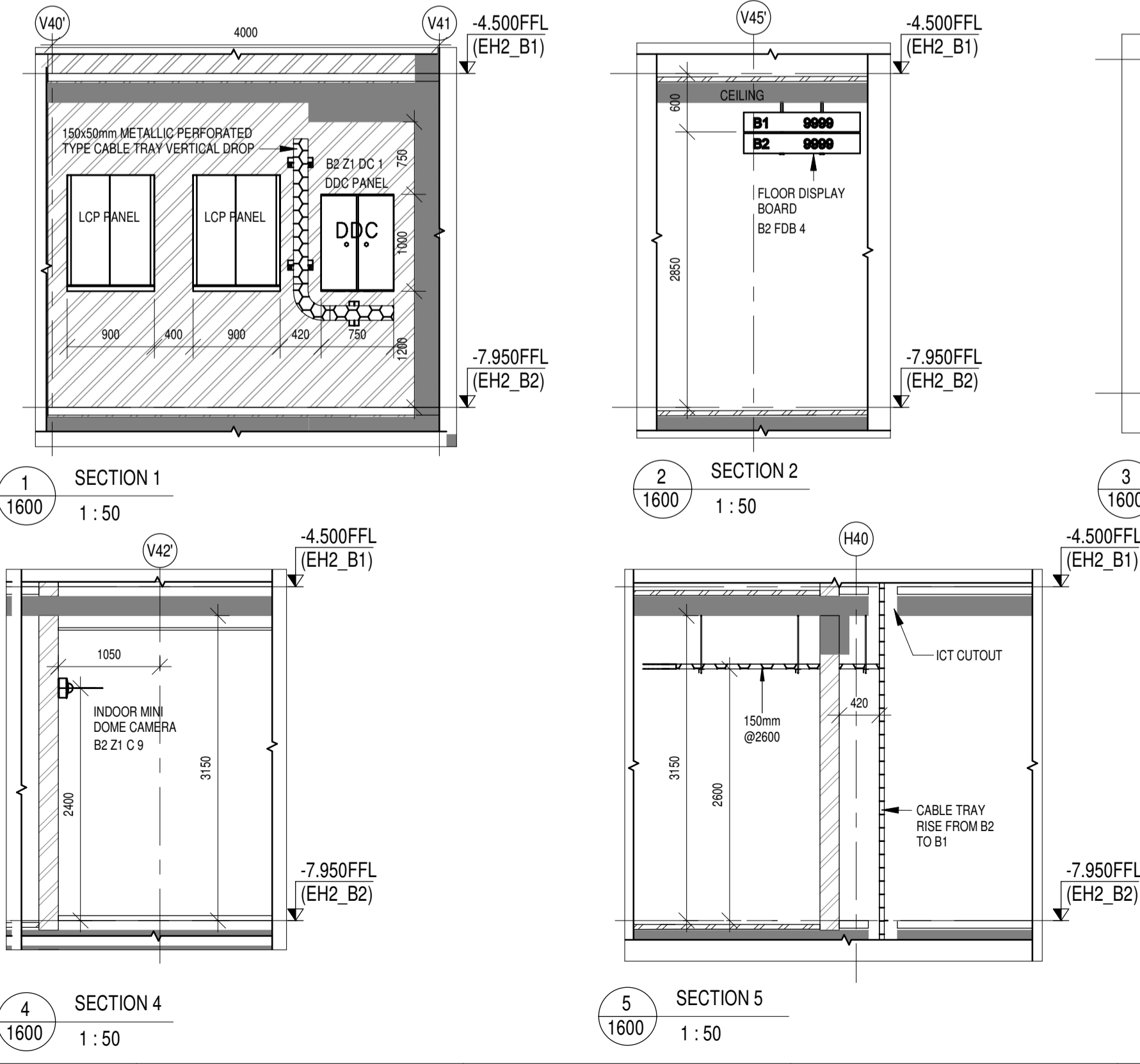
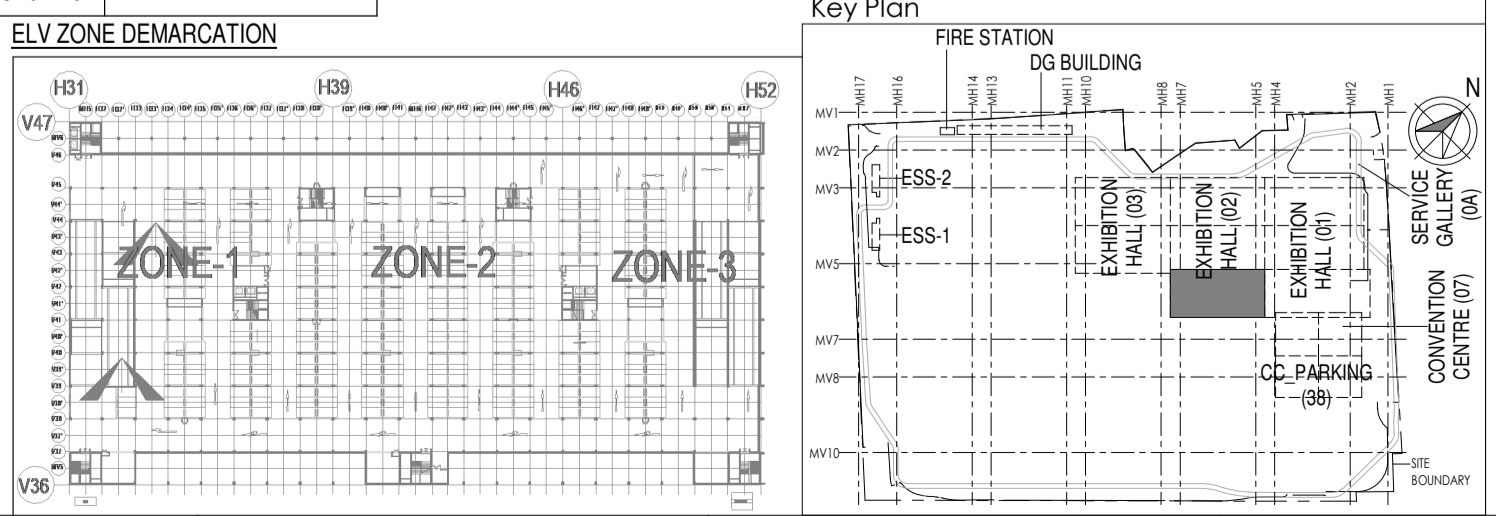
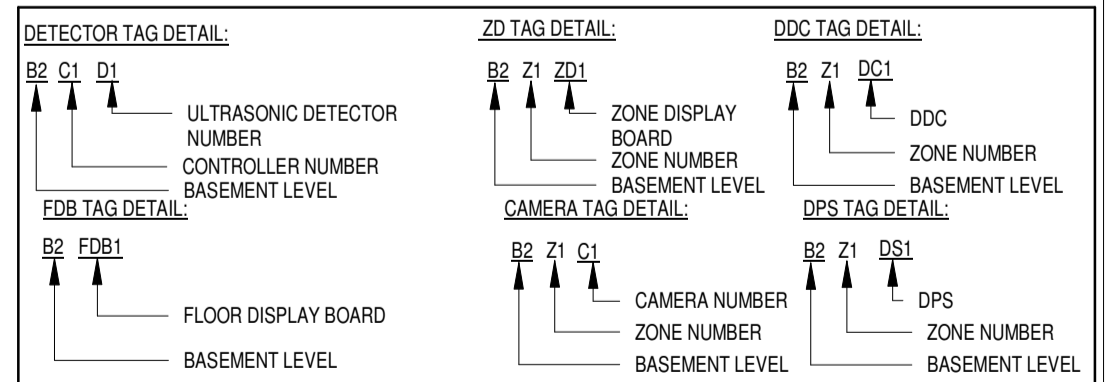
SL. NO	SYMBOL	DESCRIPTION	FIXING LEVEL
1	DDC	DDC PANEL	1200mm FROM FFL
2		19 U/I TR RACK	1100mm FROM FFL
3		150(W)x50mm(H) METALLIC PERFORATED TYPE CABLE TRAY	MADE OF HOT DIP GALVANISED SHEETS
4	D	ULTRASONIC DETECTOR	SURFACE MOUNTED
5	LED	LED INDICATOR	SURFACE MOUNTED
6	ICD	INDOOR FIXED DOME CAMERA	SURFACE / WALL MOUNTED
7	BC	BULLET CAMERA	SURFACE MOUNTED
8	EPB	EXIT PUSH BUTTON	1000mm FROM FFL
9	EDR	EMERGENCY DOOR RELEASE	1000mm FROM FFL
10	RT	MULTI TECHNOLOGY CARD READER	1000mm FROM FFL
11	FDB	FLOOR DISPLAY BOARD	3100mm FROM BOTTOM OF FLOOR DISPLAY BOARD TO FFL
12	ZD	ZONE DISPLAY BOARD	3100mm FROM BOTTOM OF ZONE DISPLAY BOARD TO FFL
13	DPS	DOOR POSITION SENSOR	ON DOOR
14	PK	PAYMENT KIOSK	FLOOR / WALL MOUNTED
15	VS	VOICE SOCKET	750mm FROM FFL
16	DS	DATA SOCKET	750mm FROM FFL
17	WAP	WIFI-ACCESS POINT	SURFACE MOUNTED
18	MD	MOTION DETECTOR	SURFACE MOUNTED
19	DS	DUCT SUPPORT	
20	CT	CABLE TRAY RISE & DROP	

**ABBREVIATION**

ACP	ACCESS CONTROL PANEL
DPS	DOOR POSITION SENSOR
DDC	DIRECT DIGITAL CONTROLLER
EN	ICT NETWORK RACK
FDB	FLOOR DISPLAY BOARD
ZD	ZONE DISPLAY BOARD
RT	MULTI TECHNOLOGY CARD READER

**REFERENCE DRAWINGS:**

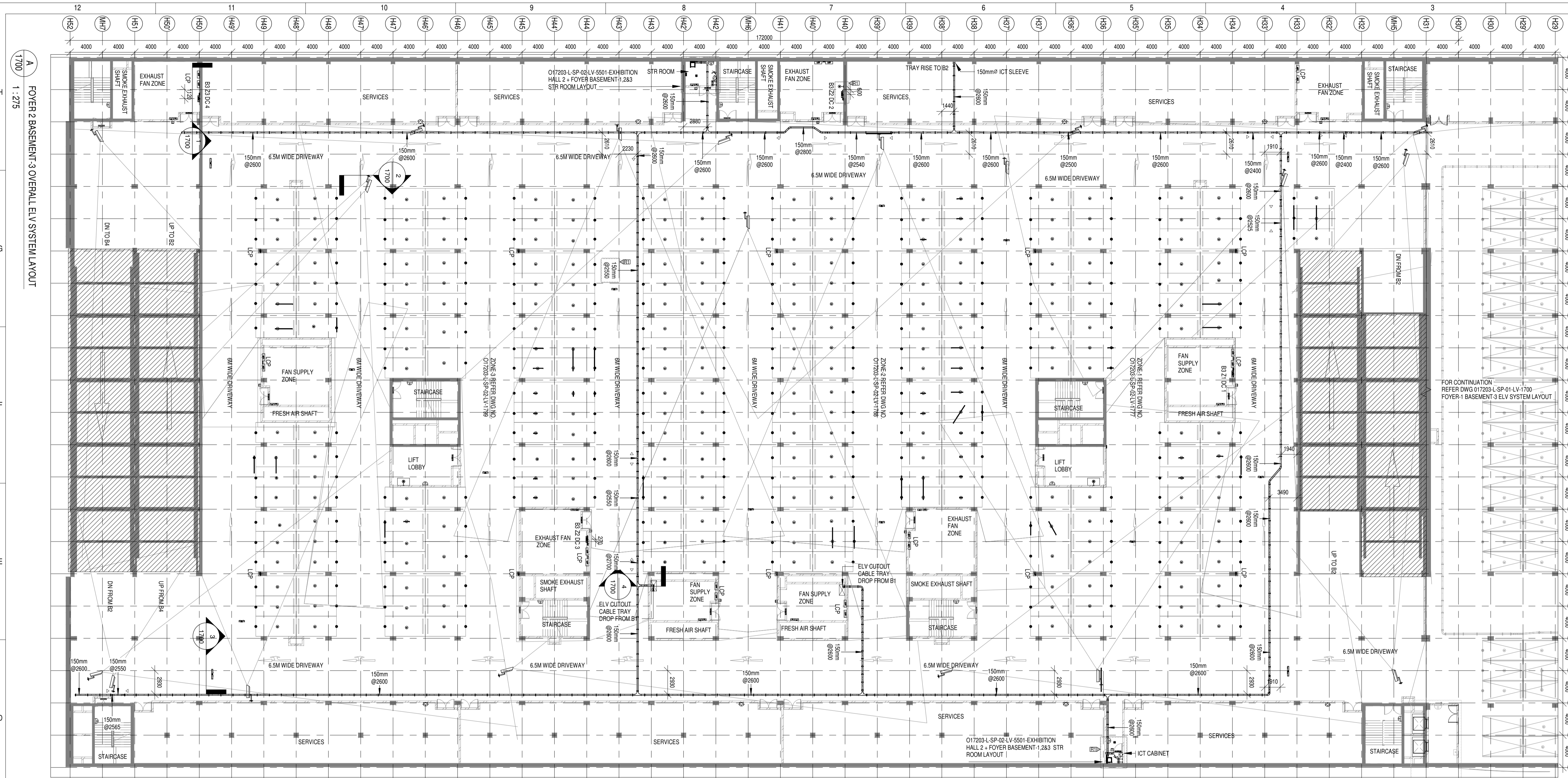
DISCIPLINE	DRAWING NO
ARCHITECTURAL	O17203-A-SP-02-WD-0002
STRUCTURAL	O17203-C-SP-02-NU-0003
ELECTRICAL EQUIPMENT & CABLE TRAY LAYOUT	O17203-E-SP-02-EE-0090,0091
ELV	O17203-L-SP-02-LV-1600
HVAC	O17203-V-SP-02-VS-2000
FPS	O17203-F-SP-02-SC-0002
FIRE ALARM SYSTEM	O17203-F-SP-02-SC-0002



**Revision History 1**  
 Cable tray rerouted and cable tray level Revised due to removal of jet fans and inclusion of Ducted exhaust system

O17203 - L - SP - 02 - LV - 1600 (FOYER 2 BASEMENT-2 OVERALL ELV SYSTEM LAYOUT)

This drawing is the property of L&T Construction. B&F-EDRC and must not be passed on to any person or body nor authorized by us to receive it nor be copied or otherwise made use either in full or in part by each person or body without our prior permission in writing.



**Owner / Employer**  
 India International Convention & Exhibition Centre Limited  
 Room No. 42A, Ministry of Commerce & Industry, DIFP, Udyog Bhawan, New Delhi - 110011, India

**Department of Industrial Policy and Promotion Ministry of Commerce & Industry Government of India**

**Knowledge Partner**  
 Delhi Mumbai Industrial Corridor Development Corporation  
 Room No. 341 & 3rd Floor Hotel Ashok, Diplomatic Enclave, 508 Chankapuri, New Delhi - 110021

**Employer's Representative**  
**Employer's Engineer**  
**Program Management Consultant (PMC)**  
**AECOM**

**Preliminary Engineering Architecture Consultants (PEAC)**  
**idom** **CPKUREJA ARCHITECTS**  
 Av. Del Monasterio de El Escorial, 4, 28049 Madrid, Spain No.D-1, Ashwad Building, Green Park, New Delhi, Delhi 110016, India

**EPC Contractor**  
**L&T Construction**  
 Buildings & Factories  
 Mount Poonamallee Road, Manapakkam, P.O.No.979, Chennai - 600 089

**EPC Contractor's Representatives**  
**Design Consultant**  
**Engineering Design and Research Center (EDRC)**  
**L&T Construction - Buildings & Factories**

**Architectural Consultant**  
**ARCOP** Arcop Associates Pvt. Ltd.  
 A-15, Pamposse Enclave, G.K-1 New Delhi, Delhi 110048, India

**Structural Proof Consultant**  
**Indian Institute of Technology (IIT) Madras**  
 Sadar Patel Rd. Opposite to C. L.R.J. Adyar, Chennai, Tamil Nadu 600036

**MEP Proof Consultant**  
**Egis India Consulting Engineers Pvt. Ltd.**  
 Plot No. 66, Sector 32, Institutional Area, Gurgaon, Haryana 122001

**ICT Proof Consultant**  
**CCR Consulting Engineers Pvt. Ltd.**  
 #47/1, 3rd Floor, Narayana Arcade, Subramaniam Road, Heerajogga Circle, Basavanagudi, Bangalore - 560004

**Certification**

<b>EPC Contractor</b>	
<b>Design Consultant</b>	
<b>Architectural Consultant</b>	
<b>Proof Consultant</b>	
<b>Structural</b>	MEP
<b>ICT</b>	

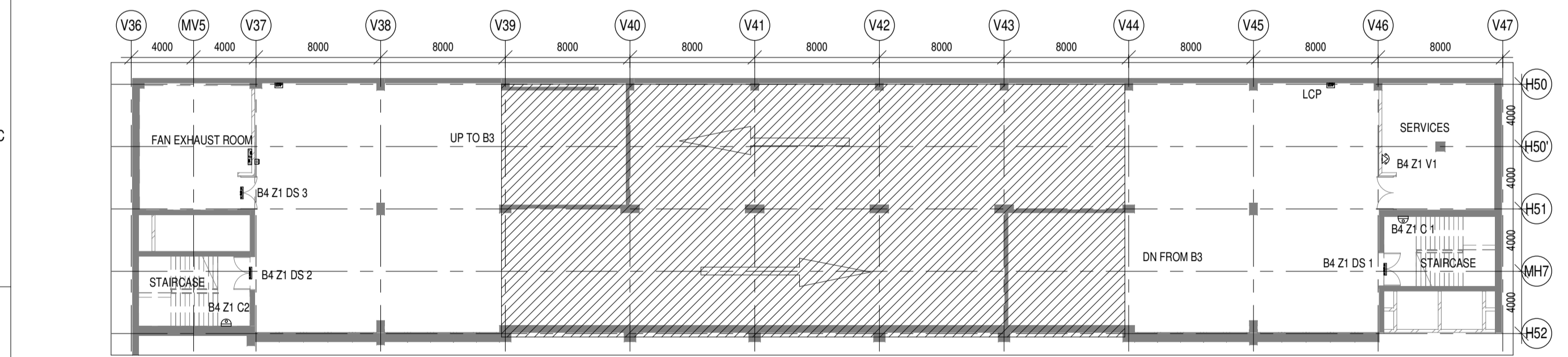
**Issued by:**  
 Employer / Employer's Engineer

REVISED AS PER REVISION HISTORY-1 AND ISSUED AS GOOD FOR CONSTRUCTION	26-04-2019	SP	PSY	MSK	GNR
REV	DESCRIPTION	DATE	DSGN	DRWN	CHKD

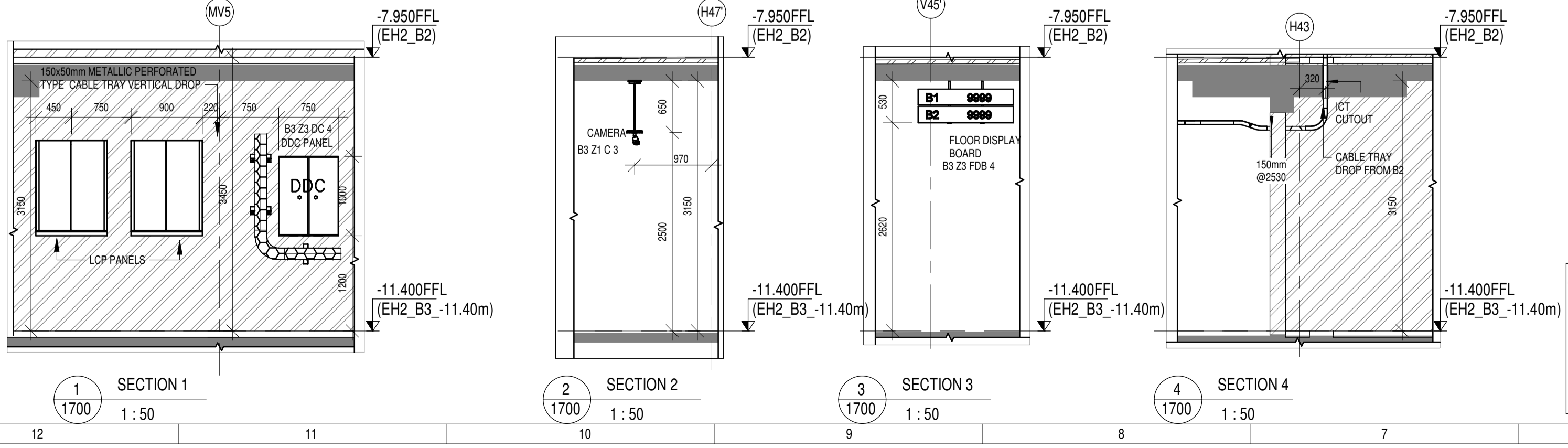
**Revisions**

ARCHITECTURE	FPS
STRUCTURAL	PIPING
ELECTRICAL	PHE
ELV SYSTEM	GIS
HVAC	GEOTECH.

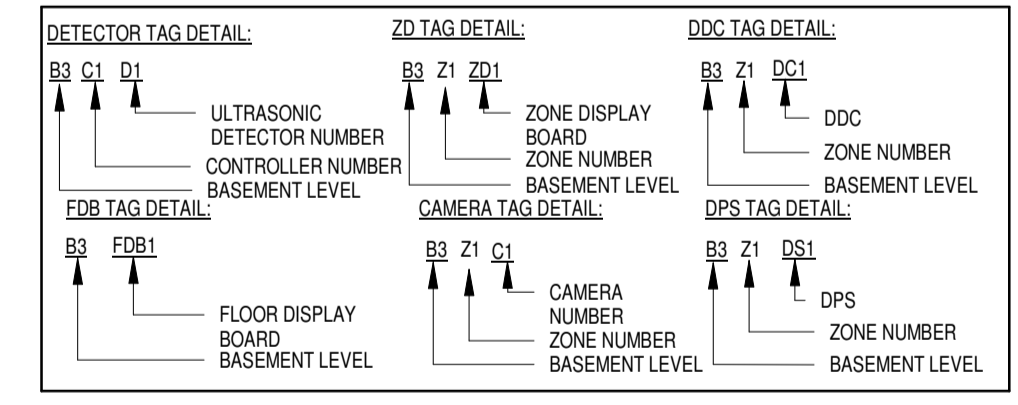
CHECKED BY: SIGN DATE CHECKED BY: SIGN DATE



**FOYER 2 BASEMENT-4 OVERALL ELV SYSTEM LAYOUT**  
 1:275



**SECTION 1** 1:50  
**SECTION 2** 1:50  
**SECTION 3** 1:50  
**SECTION 4** 1:50



**LEGENDS:**

SL. NO	SYMBOL	DESCRIPTION	FIXING LEVEL
1	DDC	DDC PANEL	1200mm FROM FFL
2	19 U I RACK	19 U I RACK	1100mm FROM FFL
3	PERFORATED TYPE CABLE TRAY	150(Wx)50mm(H) METALLIC PERFORATED TYPE CABLE TRAY	MADE OF HOT DIP GALVANISED SHEETS
4	ULTRASONIC DETECTOR	ULTRASONIC DETECTOR	SURFACE MOUNTED
5	LED INDICATOR	LED INDICATOR	SURFACE MOUNTED
6	INDOOR FIXED DOME CAMERA	INDOOR FIXED DOME CAMERA	SURFACE / WALL MOUNTED
7	BULLET CAMERA	BULLET CAMERA	SURFACE MOUNTED
8	EXIT PUSH BUTTON	EXIT PUSH BUTTON	1000mm FROM FFL
9	EMERGENCY DOOR RELEASE	EMERGENCY DOOR RELEASE	1000mm FROM FFL
10	MULTI TECHNOLOGY CARD READER	MULTI TECHNOLOGY CARD READER	1000mm FROM FFL
11	FDB	FLOOR DISPLAY BOARD	3100mm FROM BOTTOM OF FLOOR DISPLAY BOARD TO FFL
12	ZD	ZONE DISPLAY BOARD	3100mm FROM BOTTOM OF ZONE DISPLAY BOARD TO FFL
13	DPS	DOOR POSITION SENSOR	ON DOOR
14	PAYMENT KIOSK	PAYMENT KIOSK	FLOOR / WALL MOUNTED
15	VOICE SOCKET	VOICE SOCKET	750mm FROM FFL
16	DATA SOCKET	DATA SOCKET	750mm FROM FFL
17	WIFI-ACCESS POINT	WIFI-ACCESS POINT	SURFACE MOUNTED
18	MOTION DETECTOR	MOTION DETECTOR	SURFACE MOUNTED
19	DUCT SUPPORT	DUCT SUPPORT	
20	CABLE TRAY RISE & DROP	CABLE TRAY RISE & DROP	

**ABBREVIATION**

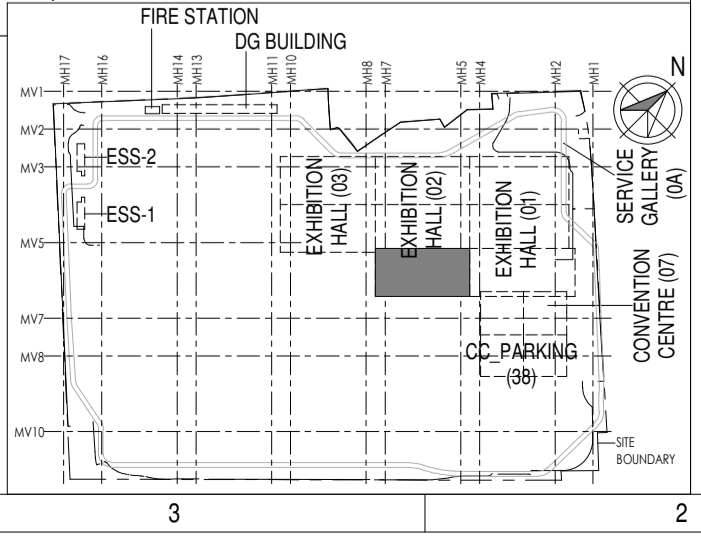
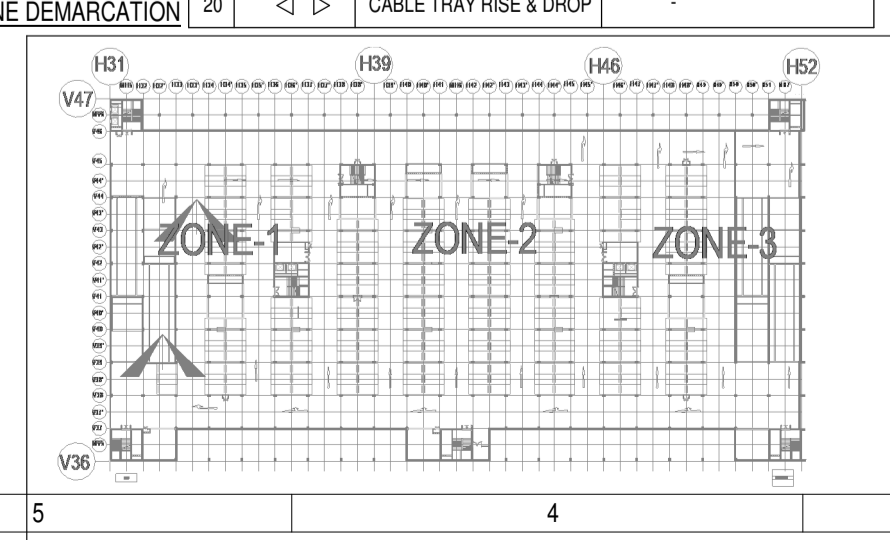
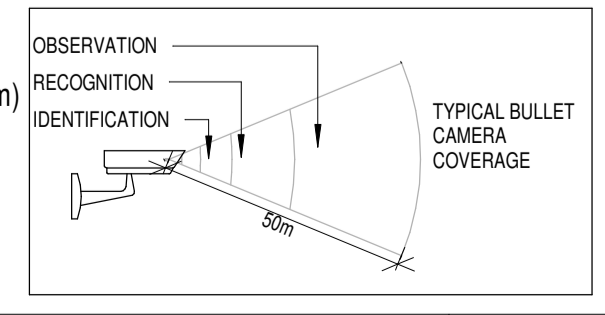
ACP - ACCESS CONTROL PANEL  
 DPS - DOOR POSITION SENSOR  
 DDC - DIRECT DIGITAL CONTROLLER  
 RN - ICT NETWORK RACK  
 FDB - FLOOR DISPLAY BOARD  
 ZD - ZONE DISPLAY BOARD  
 R - MULTI TECHNOLOGY CARD READER

**REFERENCE DRAWINGS:**

DISCIPLINE	DRAWING NO
ARCHITECTURAL	O17203-A-SP-02-WD-0002
STRUCTURAL	O17203-C-SP-02-NU-0003
ELECTRICAL EQUIPMENT & CABLE TRAY LAYOUT	O17203-E-SP-02-EE-0090,0091
ELV	O17203-L-SP-02-LV-1777 O17203-L-SP-02-LV-1788 O17203-L-SP-02-LV-1799
HVAC	O17203-V-SP-02-VS-2000
FPS	O17203-F-SP-02-SC-0002
FIRE ALARM SYSTEM	O17203-F-SP-02-SC-0002

**R1** TRAY LEVELS CHANGED  
 2. DATA POINT FOR DDC PANEL IS ADDED  
 3. ICT CABINET IS PROPOSED

**Revision History 1**  
 Cable tray rerouted and cable tray level Revised due to removal of jet fans and inclusion of Ducted exhaust system



**EPC Contractor**  
**L&T Construction**  
 Buildings & Factories

JOB NO : O17203

Project Name  
**DESIGN AND CONSTRUCTION OF INDIA INTERNATIONAL CONVENTION & EXPO CENTRE SECTOR 25, DWARKA, NEW DELHI, INDIA**

Drawing Status  
**GOOD FOR CONSTRUCTION (GFC)**

Drawing No: **L 02 1700** Rev. No: **R1**

Title:  
**FOYER 2 BASEMENT-3 OVERALL ELV SYSTEM LAYOUT**

EDRC DWG No : O17203-L-SP-02-LV-1700 Scale: As indicated Sheet Size: A1